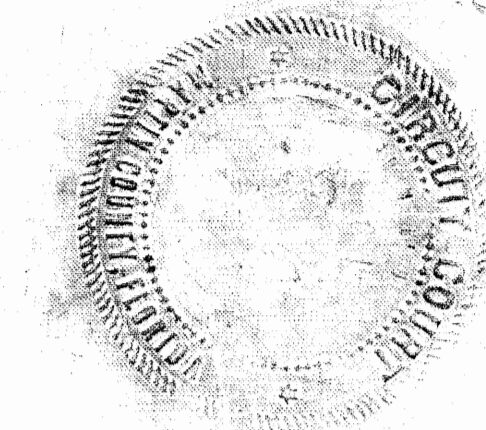
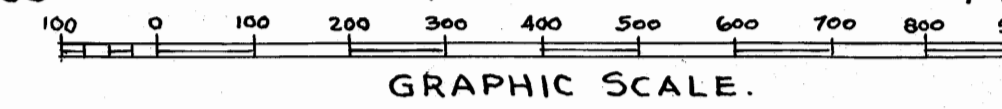


THE ISLAND BEACH

REVISED PLAT NO. 2.

JUPITER ISLAND

HOBE SOUND-MARTIN COUNTY-FLORIDA
 THE HOBE SOUND COMPANY, OWNERS.
 SCALE 1"=200' STUART, FLORIDA. MAY 1945.

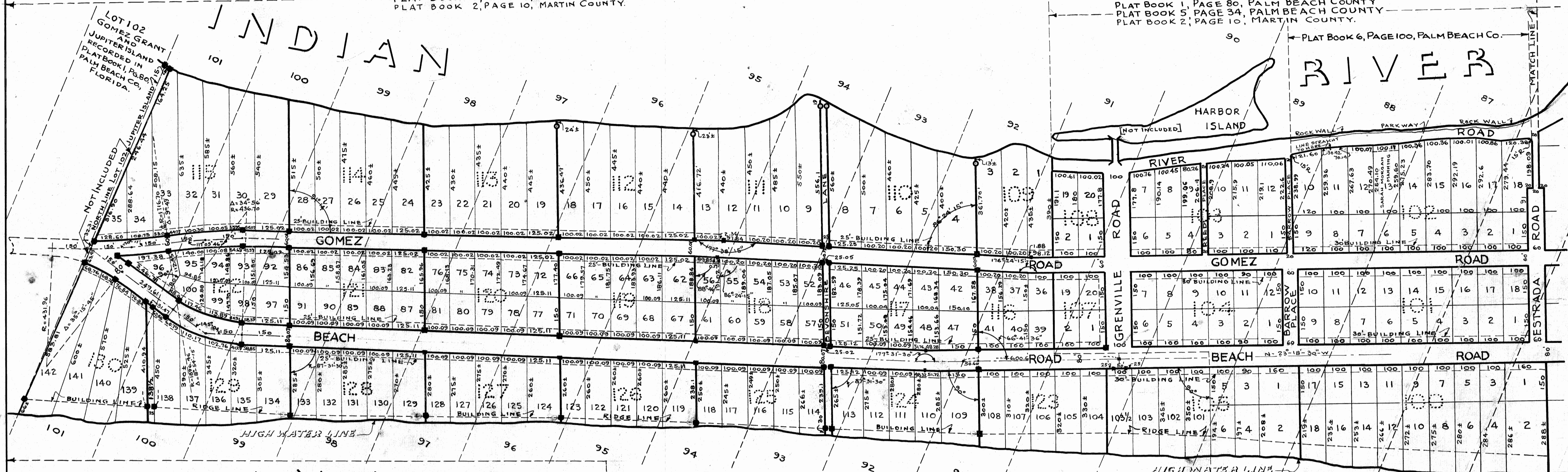


PLAT BOOK
 2
 PAGE 44
 SHEET - 1.

25295
 SEP 1945
 MARTIN COUNTY
 FLORIDA
 By T.M. Gunn & Co.

PLAT BOOK 1, PAGE 80, PALM BEACH COUNTY.
 PLAT BOOK 10, PAGE 18, PALM BEACH COUNTY
 PLAT BOOK 2, PAGE 10, MARTIN COUNTY.

PLAT BOOK 1, PAGE 80, PALM BEACH COUNTY
 PLAT BOOK 5, PAGE 34, PALM BEACH COUNTY
 PLAT BOOK 2, PAGE 10, MARTIN COUNTY.



INDIAN RIVER

RIVER

DEDICATION

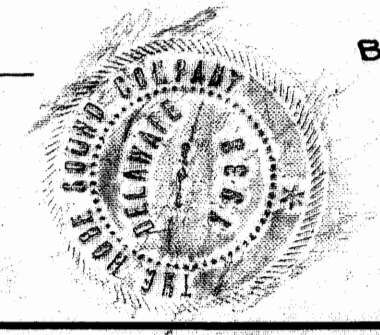
STATE OF FLORIDA | 55
 COUNTY OF MARTIN |

KNOW ALL MEN BY THESE PRESENTS: THAT THE HOBE SOUND COMPANY, A CORPORATION ORGANIZED AND EXISTING UNDER THE LAWS OF THE STATE OF DELAWARE, THE OWNER OF A PORTION OF THE TRACT OF LAND SHOWN HEREON AND MORE PARTICULARLY DESCRIBED AS FOLLOWS:

BEGINNING ON THE CENTER LINE OF THE BRIDGE ROAD ON THE NORTH, IN LOT 69 AS RECORDED IN PLAT BOOK 1, PAGE 80, PALM BEACH COUNTY RECORDS, THENCE RUNNING SOUTHERLY INCLUDING ALL THE LAND BETWEEN THE ATLANTIC OCEAN AND THE INDIAN RIVER TO AND INCLUDING LOT 101, AS RECORDED IN PLAT BOOK 1, PAGE 80, PALM BEACH COUNTY RECORDS, EXCEPT A TRIANGULAR TRACT OF LAND CONVEYED BY THE INDIAN RIVER ASSOCIATION TO RUSSELL T. YATES BY DEED DATED FEBRUARY 19th 1917, RECORDED IN DEED BOOK 88, PAGE 414, PUBLIC RECORDS PALM BEACH COUNTY, FLORIDA, SAID TRACT OF LAND LYING NORTH OF AND ADJOINING THE NORTH LINE OF LOT 102 OF THE SUBDIVISION OF JUPITER ISLAND AS RECORDED IN BOOK 1, PAGE 80; PUBLIC RECORDS PALM BEACH COUNTY HAVE CAUSED THE ABOVE DESCRIBED TRACT OF LAND TO BE RE-PLATTED AND TITLED THE ISLAND BEACH, REVISED PLAT NO. 2, JUPITER ISLAND, HOBE SOUND, MARTIN COUNTY, FLORIDA, COMPRISING SLOTS 1 AND 2 AND REVISING FIVE PRIOR PLATS AS FOLLOWS; OLYMPIA BEACH PLAT NO. 1, FILED IN PLAT BOOK 10, PAGE 18, PUBLIC RECORDS PALM BEACH COUNTY, FLORIDA, OLYMPIA BEACH PLAT NO. 2, FILED IN PLAT BOOK 10, PAGE 66, PALM BEACH COUNTY, FLORIDA; JUPITER ISLAND PLAT FILED IN PLAT BOOK 5, PAGE 34, PALM BEACH COUNTY, FLORIDA; JUPITER ISLAND PLAT FILED IN PLAT BOOK 5, PAGE 34, PALM BEACH COUNTY, FLORIDA, THE ISLAND BEACH REVISED PLAT NO. 1, AS FILED IN PLAT BOOK 2, PAGE 10, PUBLIC RECORDS OF MARTIN COUNTY, FLORIDA, THE BLOCKS RETAIN THEIR ORIGINAL NUMBERS FROM NO. 76 ON THE NORTH TO AND INCLUDING NO. 130 ON THE SOUTH. THE HOBE SOUND COMPANY HEREBY DEDICATES TO THE USE OF THE PUBLIC THE ROADS, LANES, AND STREETS SHOWN HEREON, RESERVING HOWEVER UNTO ITSELF, ITS SUCCESSORS OR ASSIGNS THE REVERSION OR REVERSIONS AND/OR WHENEVER THE SAME IS ABANDONED BY THE PUBLIC OR DISCONTINUED BY LAW.

IN WITNESS WHEREOF, THE HOBE SOUND COMPANY HAS CAUSED THESE PRESENTS TO BE SIGNED BY ITS PRESIDENT AND SECRETARY AND ITS CORPORATION SEAL TO BE AFFIXED BY AND WITH THE AUTHORIZATION OF ITS BOARD OF DIRECTORS THIS 3rd DAY OF AUGUST A.D. 1945

ATTEST T.T. Oughterson
 SECRETARY.



THE HOBE SOUND COMPANY
 BY: Permelia P. Reed
 PRESIDENT.

ACKNOWLEDGEMENT

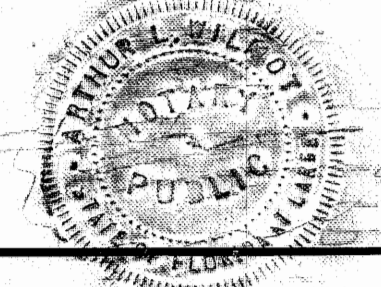
STATE OF FLORIDA | 55
 COUNTY OF MARTIN |

BEFORE ME PERSONALLY APPEARED PERMELIA P. REED AND T.T. OUGHTERSON, TO ME WELL KNOWN AND KNOWN TO BE THE PRESIDENT AND SECRETARY, RESPECTIVELY, OF THE HOBE SOUND COMPANY, THE CORPORATION NAMED IN THE FOREGOING INSTRUMENT, AND KNOWN TO ME TO BE THE PERSONS WHO, AS SUCH OFFICERS OF SAID CORPORATION, EXECUTED THE SAME, AND THEN AND THERE THE SAID PERMELIA P. REED AND THE SAID T.T. OUGHTERSON DID ACKNOWLEDGE BEFORE ME THAT SAID INSTRUMENT IS THE FREE ACT AND DEED OF SAID CORPORATION BY THEM RESPECTIVELY EXECUTED AS SUCH OFFICERS FOR THE PURPOSE THEREIN EXPRESSED, THAT THE SEAL, THEREUNTO ATTACHED IS IT'S CORPORATE SEAL, BY THEM IN LIKE CAPACITY, AFFIXED, ALL UNDER AUTHORITY IN THEM DULY VESTED BY THE BOARD OF DIRECTORS OF SAID CORPORATION.

WITNESS MY HAND AND OFFICIAL SEAL THIS 11th DAY OF SEPT. 1945.

My Commission Expires 2-9-1947

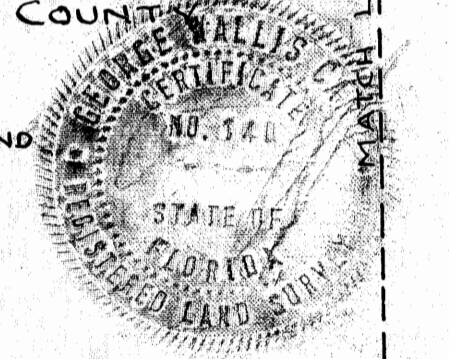
Arthur C. Wilmet
 NOTARY PUBLIC.
 Notary Public, State of Florida at large
 My Commission expires February 9, 1947



SURVEYORS CERTIFICATE

I HEREBY CERTIFY THAT THIS PLAT IS A TRUE AND CORRECT REPRESENTATION OF THE LAND PLATTED AND THAT PERMANENT REFERENCE MONUMENTS HAVE BEEN PLACED ON CERTAIN LAND REQUIRED BY LAW.

Geo. W. Carr
 CIVIL ENGINEER & LAND SURVEYOR
 FLA. STATE CERT. No. 140 & No. 175.



SUBSCRIBED AND SWORN TO BEFORE ME THIS 11th DAY OF SEPT. 1945

Arthur C. Wilmet
 NOTARY PUBLIC.
 My Commission Expires 2-9-1947

APPROVED FOR RECORD 9-21-1945.
 FOR THE BOARD OF COUNTY COMMISSIONERS
 OF MARTIN COUNTY, FLORIDA.

BY: Arthur C. Wilmet

SHEET NO. 1 OF 2 SHEETS.

GEO. W. CARR
 REGISTERED CIVIL ENGR & LAND SURVEYOR
 FLORIDA CERTIFICATES 173 & 140
 WEST PALM BEACH, FLORIDA.
 DRAWING No. 2348.

REFERENCES: RECORDED PLATS AS INDICATED.
 CONCRETE MONUMENTS SHOWN THUS - ■
 C&M. DWG. 5167-E.